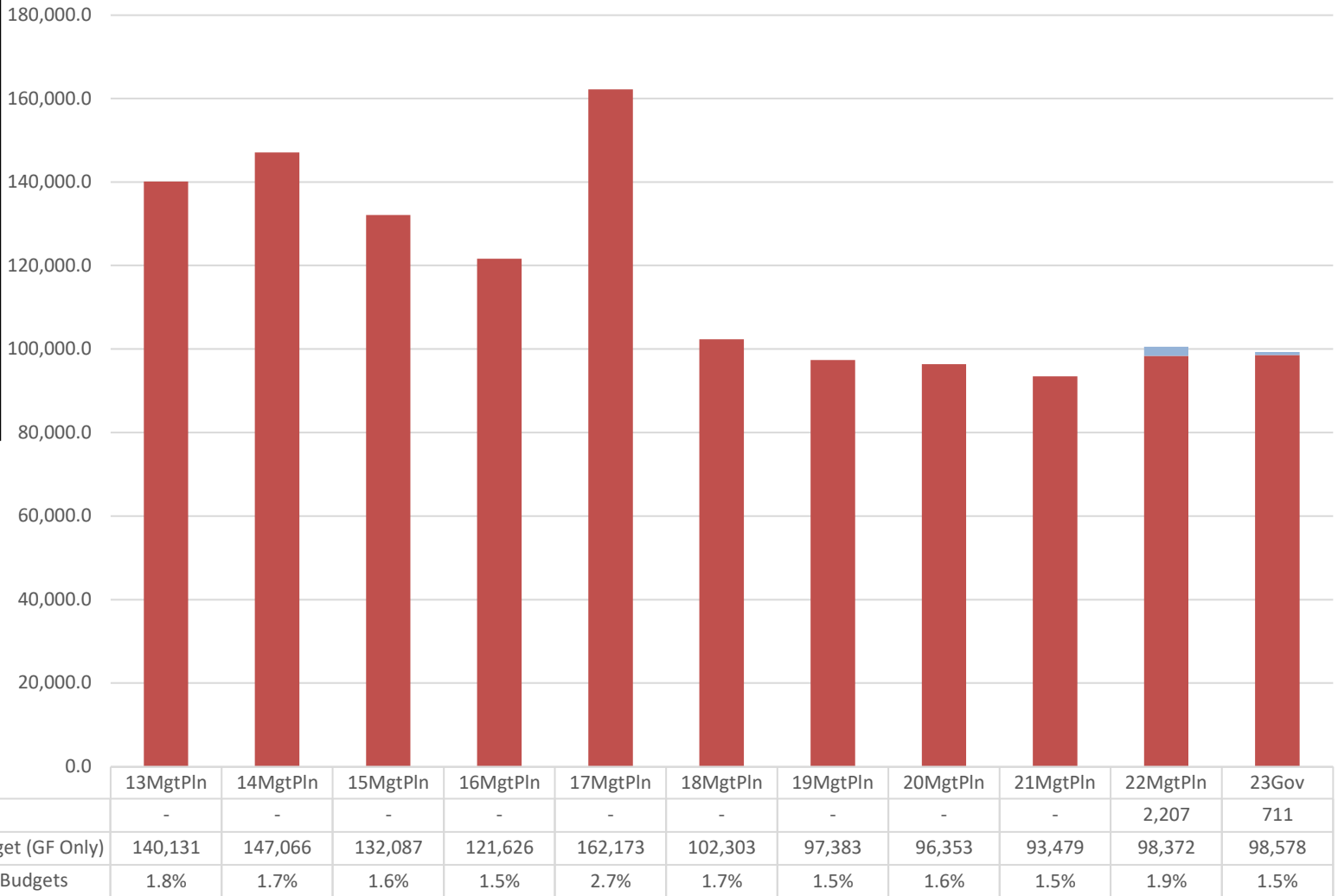


Department of Commerce, Community & Economic Development Share of Total Agency Operations (GF Only) (\$ Thousands)

The department's GF budget *decreased* by about \$41 million (-29%) between FY13 and FY23 - an average annual decline rate of -2.9%.

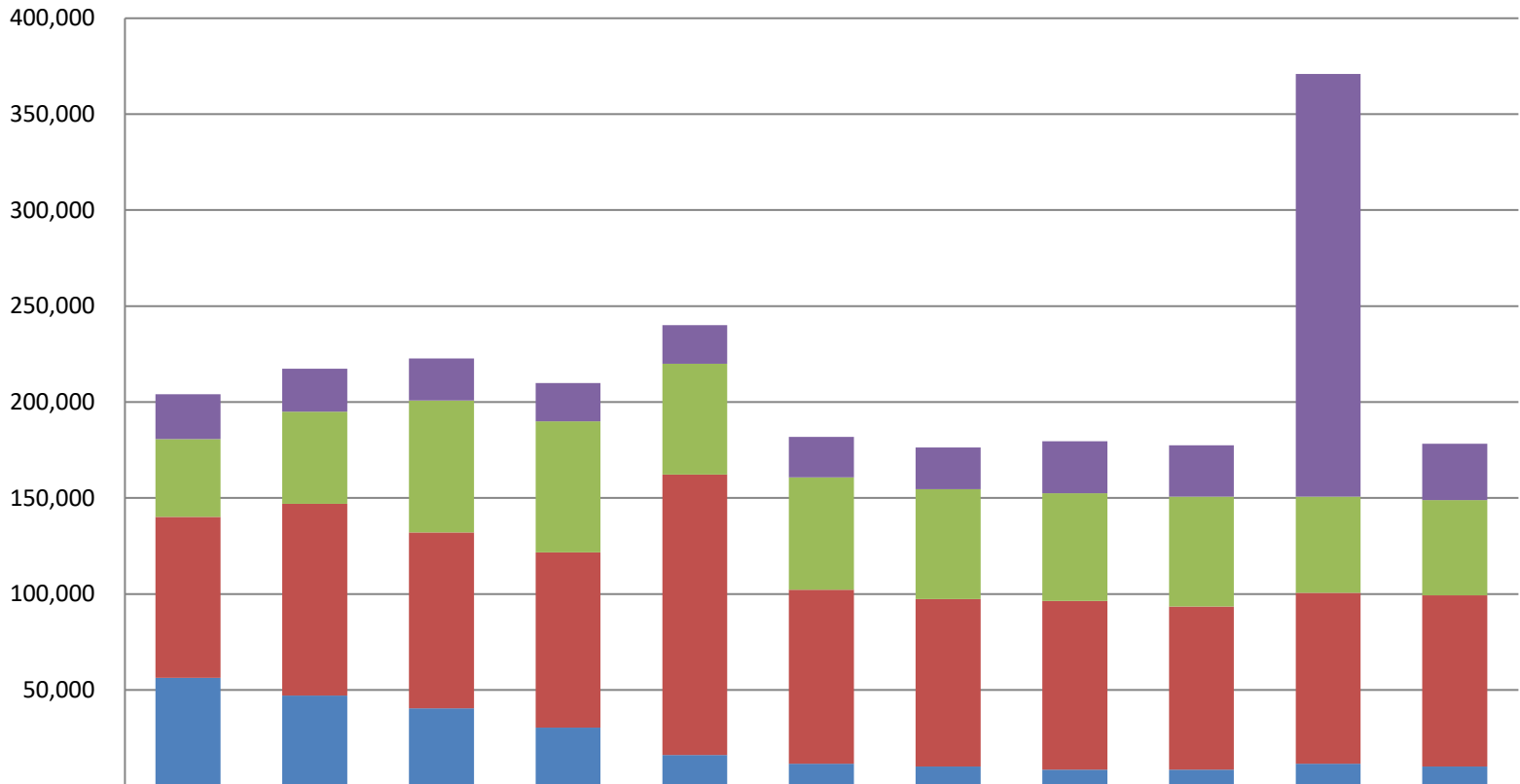
The department's total FY23 GF budget equals \$306 per resident worker, based on 323,711 resident workers.



Department of Commerce, Community & Economic Development Total Funding Comparison by Fund Group

Between FY13 MgmtPln and 23Gov:
 --UGF decreased by \$46.3 million (-82%)
 --DGF increased by \$5.4 million (6%)
 --Other Funds increased by \$9.1 million (22%)
 --Federal Receipts increased by \$5.9 million (26%)

(All Funds)
 (\$ Thousands)



	13MgtPln	14MgtPln	15MgtPln	16MgtPln	17MgtPln	18MgtPln	19MgtPln	20MgtPln	21MgtPln	22MgtPln	23Gov
Federal Receipts (Fed)	23,297	22,420	21,924	20,016	20,186	21,091	21,759	27,107	26,740	220,111	29,258
Other State Funds (Other)	40,652	47,901	68,772	68,311	57,711	58,415	57,240	56,136	57,237	50,185	49,715
Designated General (DGF)	83,706	99,960	91,633	91,148	145,948	90,716	87,281	87,831	85,017	88,997	89,123
Unrestricted General (UGF)	56,425	47,105	40,454	30,478	16,225	11,587	10,102	8,523	8,462	11,582	10,166

Appropriations within Department of Commerce, Community & Economic Development (GF Only) (\$ Thousands)

