

Agency: Commerce, Community and Economic Development**Grants to Named Recipients (AS 37.05.316)****Grant Recipient: Native Village of Unalakleet (Unalakleet IRA)****Federal Tax ID: 92-0039457****Project Title:****Project Type: Planning and Research**

Native Village of Unalakleet (Unalakleet IRA) - Southern Sub Regional Assisted Living Facility

State Funding Requested: \$300,000
One-Time Need**House District: 39 / T****Brief Project Description:**

A pre development project: Funds are sought for the pre-development phase of a sub regional Elder Assisted Living Facility to deliver residential and home based services to Unalakleet, Koyuk, Shaktoolik, St Michael, Stebbins in co-operation with the NSHC and in partnership with the other villages.

Funding Plan:**Total Cost of Project: \$350,000**

	<u>Funding Secured</u>		<u>Other Pending Requests</u>		<u>Anticipated Future Need</u>	
	<i>Amount</i>	<i>FY</i>	<i>Amount</i>	<i>FY</i>	<i>Amount</i>	<i>FY</i>
Federal Funds	\$50,000	2010				
Total	\$50,000					

Detailed Project Description and Justification:

Since 2002 (as noted in the Community Plan of 2002) Unalakleet has proposed to construct, a facility that would meet the needs of its own community and that of the sub-region. This project is now #3 in the current 2009-2013 Community Plan. Unalakleet has long been a hub community for services to the surrounding area. In 2005 a new sub-regional health clinic was constructed to provide clinical and dental care to the communities of Unalakleet, Stebbins, Saint Michaels, Shakttoolik, and Koyuk. Along with improving healthcare has been the desire to increase other community services. One aspect has been focusing upon assisting elders with daily living tasks and providing affordable residence where elders can live and socialize with their peers. Included in this effort are coordinating community meal programs, home visits to assist with daily living activities, and in-home health care. The desired assisted living center would fill the need for an elder residential facility and provide a base for coordinating community wide elder programs.

The project for which support is requested was formally launched as a sub-regional project, over 3 years ago by the Native Village of Unalakleet (NVU) working with the partner Villages of the sub region (Koyuk, Shaktoolik, St Michael, and Stebbins), has accomplished the following:

- Documented tribal support from the Villages of Koyuk, Shaktoolik, Stebbins and St. Michael;
- A \$350,000 ANA (2010-2012) Grant to support a comprehensive needs and capacity assessment of the sub-region leading to the development of a 5 village Elder Certified Nurses Aid workforce which would be developed concurrently with a business plan and home care program as a pre-requisite for actually constructing a facility;

**\$300,000
Approved**

- Support from AK dept of Labor for the workforce training;
- Documented support of the plan from the Unalakleet Native Corporation, the City of Unalakleet and Norton Sound Health Corporation;

A comprehensive preliminary Feasibility Study by Larsen Consulting Group;

- Initial funding for the feasibility study by the Department of Commerce, Community and Economic Development;
- Funding support for grant writing from Kawerak, Inc.
- Acquisition of a well located site across from the new sub-regional Health Clinic.

Both a social and economic development project, as noted above --- it is now been divided into two programs which are operating concurrently;

• Non-capital construction components*** This portion has been funded and a portion of these funds would be considered matching, as they relate to need and administration***Consisting of : all assessments, organizational /business planning, recruitment of a potential workforce from the partner villages, management, and job training and deployment of home based services delivered to each Village by a local workforce that may be instituted on a job sharing basis. This would occur concurrently with the capital construction activities and enable a trained workforce to be ready to work in the facility when it is completed. (Moving or reassigning a trained workforce from the Villages on a rotation basis -while retaining Home based services.)This approach also benefits elders and the Villages by delivering services sooner and creating jobs.

• Pre development***: capital program assessment and all other pre-development activities which we are asking the State legislature to cover.

***Analysis of assessments from a capital construction point of view; community inputs for the purpose of developing an architectural program; survey, environmental review, soils testing, preliminary engineering (site improvement, water, sewer, electric etc) design development, preliminary drawings, final design, bid documents, legal and project management. The site is well located across the street from the health clinic with all services to the site.

Construction: Bids out, materials ordered, and phased construction FY 2010-opening in FY 2011.

The Entire Project upon completion would create:

- Funds would be spent in AK—economic stimulus benefits
- 12-15 permanent jobs by May 2011--- with even distribution in each of the partner Villages;
- Creating an additional 10 FT jobs upon completion of the facility, in Unalakleet but with sub-regional personnel;
- Creating a minimum of 20 FT temporary positions for the duration of the construction period; Utilizing many of the resources available regionally;
- Leveraging maximum use of the Health Clinic...which also would add jobs- 2-3 minimum;
- Indirect economic impact of greater utilization of locally available goods & services ;
- More stable villages---retention of their Elders ;
- Serving over a period of 10 years approximately 400 Elders at home or in local residential care....which would amount to extensive savings by the State and Federal gov't which now must pay for moving them to Anchorage

We have received full 2 year funding for the non construction element of the project from the ANA --- SEDS Alaska program which will support our collaborative efforts with the partner villages, NSHC, Kawerak, Inc, NW Campus, UAF, NACTEC and their associated School Districts, AK departments of H & SS and Labor, AK Mental Health Trust Authority, and others.

Project Timeline:

Pre-development: June 2010---- Feb 2011

Entity Responsible for the Ongoing Operation and Maintenance of this Project:

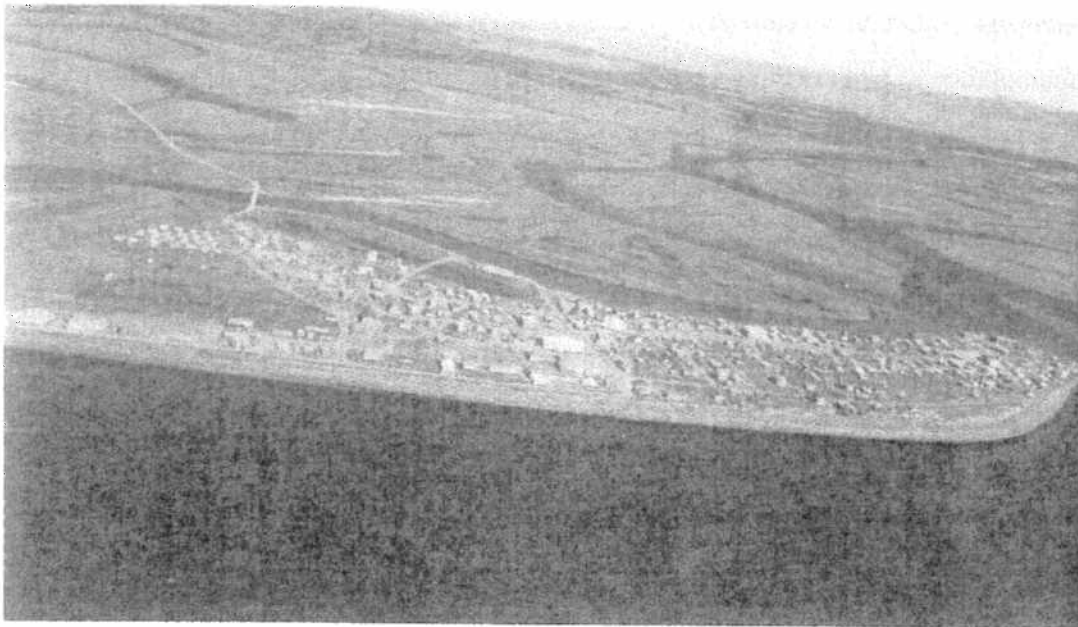
Native Village of Unalakleet

Grant Recipient Contact Information:

Name:	President, Unalakleet IRA
Address:	PO Box 270 Unalakleet, AK 99684
Phone Number:	624-3622
Email:	mwoodh@earthlink.net

Has this project been through a public review process at the local level and is it a community priority? ☒ Yes ☐ No

UNALAKLEET LOCAL ECONOMIC DEVELOPMENT PLAN 2009-2013



2009-2013 Top Priorities

1. **Erosion control** – seawall funding and rock revetment, develop a hazard mitigation plan, and develop an emergency shelter out of the old school gym or other options
2. **New water line** construction, new water tank/source
3. **Elder assisted living** facility for seniors or disabled
4. **Energy** - waste heat installation/connection for the IRA office and Myles Gonongnan/Aaron Paneok Memorial Hall (community hall), wind turbine construction, seek alternative energy for community, weatherization of homes and businesses.
5. **Housing** – continue to plan new subdivision on the hill, more housing/apartments, and fix older homes.
6. **New public safety building/jail**, fill VPSO vacancy.
7. **Fix old/build new snow fences, fix old and install new street lights.**
8. **New maintenance shop**
9. **More local job training**, training for all city employees
10. **Internet satellite acquisition** for the IRA office/community hall, new furniture/electronic equipment community hall.

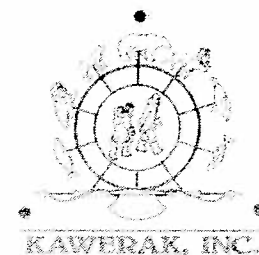
Submitted to:

**The Community of Unalakleet and
The Bering Strait Development Council**

Submitted By:

The Unalakleet Planning Organizations
and
Kawerak's Community Planning
and Development Program

June 2, 2009



8.3 PRIORITY #3 Elder assisted living facility for seniors or disabled

8.3.1 Project Description

Background

Project History - This project was first included in the Unalakleet Community Plan of 2002.

Unalakleet has long been a hub community for services to the surrounding area. In 2005 a new sub-regional health clinic was opened to provide clinical and dental care to the communities of the Southern Bering Strait Sub region of Unalakleet, Stebbins, Saint Michael, Shaktoolik, and Koyuk. The NVU recognized that along with improving healthcare the clinic could leverage an increase other community services. And given the Elders' needs they have focused upon assisting elders with daily living tasks and providing affordable residence where elders can live and socialize with their peers. To that end, Unalakleet has participated in Alaskan elder studies, such as those published by the Alaska Native Tribal Health Consortium in 2005 and in 2007, the National Resource Center on Native American Aging. These research summaries supported the need for a variety of Elder assistance programs in Native rural communities, including Unalakleet. Such programs range from in-home health care and/or assistance with daily living activities, to residential assisted living and monitored nursing care.

Therefore The Village of Unalakleet is developing a sub regional Elder Assisted Living Facility that would provide one location from which all Elder programs, so urgently needed, would be managed. They will be: home based care; transition programs (transitioning elders from a hospital stay back to their home, outreach programs (such as the elder meals program); social programs (such as adult protective services); managed care; and residential assisted living services all delivered with a focus on traditional culture and food. The policy of consolidating Elder programs within one facility will provide multiple program fund streams to contribute towards the facility's sustainment while improving coordination among programs. And Community's plan to retain its Elders is consistent with its mission to *"strengthen and preserve the social, economic, educational and cultural well being of the Native people of Unalakleet through self governance."*

The Facility, conceived as sub-regional hub, will be located across the street from the sub Regional Health Center, optimizing use of both facilities and maximizing opportunities for cost effective, professional management, which could be delivered as a unit though an yet to be determined association between the NVU, its partner Villages and the NSRC.

To date the projects has achieved several key benchmarks:

- Documented tribal partnerships in the project from the Villages of Koyuk, Shaktoolik, Stebbins and St. Michael;

- Ownership of the building site with electricity, water and sewer services at the property line.
- Collaboration with the Unalakleet Native Corporation, the City of Unalakleet and Norton Sound Health Corporation
- Completion of a Preliminary Feasibility Study (September 2007), prepared by the Larsen Consulting Group, Inc. and funded by Department of Commerce, Community and Economic Development
- Funding support from Kawerak, Inc. to support fund development for the project
- A strategy to develop a viable management organization and workforce for the Elder Care programs and Partnerships with the Alaska State dept of Labor, Kawerak, Inc. and the NSEDC for workforce and management training.
- Funding sought for the management and workforce development components

Project Needs and Benefits

Need for Project - In Unalakleet and the Bering Strait Southern Sub region (Koyuk, Shaktoolik, St Michael, and Stebbins) there are two conditions, relating to the Care of Elders, that the native Village of Unalakleet is currently addressing. They are:

- The rapidly increasing population of Elders, which, like the rest of the US, is increasing at a rate that is higher than that of the general population. In late 2008 it is estimated that there are 350 Elders living in the Sub Region.
- There are currently neither residential nor outreach home based care services in the Sub region, and only the 15 bed Quyanna Care Skilled nursing facility which is part of the NSHC, located in Nome and serving a population of 9,300 . As a result Elders in need of a variety of levels of care are displaced to institutional facilities out of the Region, where they remain alone until their death.

Benefits of the Project:

- Retention of Elders as healthy productive members of the community and strengthening of traditional culture
- Initiation of a job training program for the workforce that anticipates offering trainees opportunities to climb the health care career ladder and managers to be trained in the health care field
- Establishment of a minimum of 15 FT jobs filled by trained workforce
- Establishment of a working partnership among the Southern Sub region that would be in place to address other Sub regional issues in the future and also with the NSHC.
- A facility that would support community use in cultural and family activities
- Leveraging of increased utilization of the Anikkan Health Center
- Leveraging of Title VI Funds for increased meal and outreach services in Unalakleet and its partner Villages
- Leveraging of funds for other programs to support Elder care such as Home modification

- Indirect --economic impact of higher utilization of other Unalakleet businesses including residential rentals, supplies, food, transportation etc.
- Positive capacity (an experience) to implement and manage project

Potential Constraints to Project Development

- Funds to meet the needs of successfully developing this project that include: extensive planning, staff and cost of all materials, and construction
- Construction inhibitors – weather, transportation
- Lack of realistic sustainability plan

8.3.2 Project Implementation

Plan of Action

Project Requirements - Though the project has achieved some of its goals, it requires key pre-development funds to move it forward. Needs are:

- Current Market Research: for needs assessment, and market readiness including parallel research on workforce development, retention and positive economic impact;
- Development of the business plan, with optimum management structure to implement and manage a facility and workforce. This component would include a formal relationship with the NSHC and partner Villages.
- A trained sub regional based workforce to serve the Elder's needs with home based care and as facility employees. Workforce would utilize a job sharing structure to accommodate subsistence and permit workers to be drawn from all the Partner villages.
- Survey, soils testing
- Based on Market research Design development / bid documents
- Final design
- All other engineering
- Fund development plan for operation of workforce and facility. (sustainability)
- Implementation of optimum organizational structure and workforce.
- With, The Larsen Consulting Group, the tribe has established a timeline, which would enable a completed facility to be opened in the winter of 2010, if we were able to begin pre-development work in 2009.

Action Plan - All activities to be conducted with consistent public input and co-operation among partner villages, NSHC and NVU.

- Develop unbiased, comprehensive market research which will: advise the design development of the facility; workforce planning and implementation; fund development planning for sustainability
- Raise funds to complete all pre-development activities including bid documents
- Issue RFP's with bid documents
- Develop final costs
- Raise funds to build
- Build

- Simultaneously with the construction components pursue a parallel path of business planning, and workforce development and deployment
- Bring construction and business elements together to open the facility.

Organization Responsible and Contact Information:

- Native Village of Unalakleet, PO Box 270, Unalakleet, AK 99684 (lead agency)
- Native Village of Unalakleet Housing Authority, PO Box 270, Unalakleet, AK 99684
- City of Unalakleet, P.O Box 28, Unalakleet, AK 99684
- Unalakleet Native Corporation, P.O. Box 100, Unalakleet, AK 99684

Funding Possibilities:

- **Denali Commission Elder Housing Program:** Grants for elder assisted living facilities. <http://www.denali.gov>, (907) 271-1189, Program Manager, Denali Daniels, ddaniels@denali.gov
- **USDA-RD:** Housing and Community Facilities Programs helps rural communities by providing loans and grants for housing and community facilities, including apartments for the elderly. <http://www.rurdev.usda.gov/ak/HousingAndCommunity.htm>, 907- 761-775, USDA-RD, Alaska State Office, 800 Evergreen, Suite 201, Palmer, AK 99645
- **HUD/ICDBG/CDBG:** Posts annual Notice of Funding Availability for grant application for: Housing, Community Facilities, and Economic Development, primarily for low and moderate income persons. <http://grants.gov> will take you to the grant application process and information. HUD- Colleen Bickford 1-877-302-9800 or 907-677-9800, ICDBG - <http://www.hud.gov/offices/pih/ih/grants/icdbg.cfm>, Barbara Gallegos 602-379-7215, CDBG - <http://www.hud.gov/offices/cpd/communitydevelopment/programs/>
- **Alaska Mental Health Trust Authority:** Has a variety of grants for the elderly with mental disabilities, such as Alzheimer's disease, <http://mhtrust.org/index.cfm?section=trust-funding&page=Grant-Opportunities>
- **State of Alaska Senior & Disabilities Services/Grant Services:** Grant programs include: Senior Residential Services, Nutrition, transportation, & Support Services. <http://www.hss.state.ak.us/dsds/grantservices.htm>. Lisa Morley, Grants Program Coordinator 907-465-4996
- **DCCED** – Community Development Block Grant: Provides financial resources for 1) public facilities and 2) planning activities which address health and safety issues of local residents and to reduce the costs of community services. Jill Davis, Program Manager, e-mail: jilldavis@alaska.gov, 907-451-2727, State of Alaska Department of Commerce, Community and Economic Development, <http://www.dced.state.ak.us/> 907-443-5459

- ***Alaska Housing Finance Corporation*** – Senior Housing Development Fund: Provides funding for housing for persons who are 60+. <http://www.ahfc.state.ak.us/grants/schdf.cfm>. Elaine Mello. 907-330-8236
- ***Rasmuson Foundation***: Mostly serves as a funding partner for Alaska projects, including health facilities. <http://www.rasmuson.org>. 907-297-2700
- U.S. Administration on Aging, www.aoa.gov/ain/resources/fs.html
- ***Economic Development Administration*** - www.eda.gov. Bernhard Richert 907-271-2272
- ***Private Foundations and Local Donations***