

**Agency: Commerce, Community and Economic Development****Grants to Named Recipients (AS 37.05.316)****Grant Recipient: Meadow Lakes Community Council, Inc.****Federal Tax ID: 92-0102654****Project Title:****Project Type: New Construction and Land Acquisition**

# Meadow Lakes Community Council, Inc. - Community Campus Sports Fields Improvements

**State Funding Requested: \$178,620****House District: Mat-Su Areawide (13-16)**

One-Time Need

**Brief Project Description:**

Funding to construct and finish sports fields project on the Meadow Lakes Community Campus.

**Funding Plan:**

Total Project Cost:	\$183,620
Funding Already Secured:	(\$5,000)
FY2013 State Funding Request:	<u>(\$178,620)</u>
Project Deficit:	\$0

*Funding Details:**2010 State of Alaska appropriation \$195,000***Detailed Project Description and Justification:**

The active development of this Community Campus began three years ago. First, the Meadow Lakes Community Council used a State appropriation to design the master plan for this 40-acre parcel the Community Council purchased from the Mat-Su Borough to serve the residents of Meadow Lakes. The master plan was based on the needs and desires of the community and includes a Multi-Use Community Center, sports fields, trails, and senior housing. The State appropriation funding was also used to clear and grub the Community Center site and to survey the entire 40-acre parcel.

Meadow Lakes Community Council was awarded \$2.2 million from Alaska Housing Finance Corporation (AHFC) in 2008 to construct an 8-unit senior housing project. That project opened in April 2009 and is full. The MLCC was able to extend the natural gas line to the property, giving residents on both Karen and Kim Drives access to natural gas. In addition, Kim Drive, the main road into the project was widened and paved up to the property.

In 2008, MLCC also received a State appropriation to design an alternate access road to the Parks Highway. They not only designed this road, but also constructed a portion of it to the sports field location, and cleared and grubbed 160,000-square-feet of the property to be used for the sports fields.

In 2010, MLCC received a State appropriation for \$195,000, which completed the design and engineering for the entire sports field area; upgraded the access road to bring it up to Mat-Su Borough standards; completed the clearing, grubbing, and construction of the regulation-size soccer field, including hydroseeding; constructed the initial basketball court, including paving and installation of the goals; constructed all of the parking areas in the plans; cleared and grubbed the two softball fields; prepared the area for the construction of Phase I of the community playgrounds; completed the walking trail that

goes around the fields; and completed the hydroseeding for the area between the fields.

In 2011, the Mat-Su Borough approved a grant for \$50,000 to MLCC for the construction of the first of two playgrounds areas on the Sports Fields. These funds will be used to purchase and install playground equipment for 2-5 year olds on the playground site that was prepared last summer. MLCC, in conjunction with Meadow Lakes Community Development, Inc., is actively seeking funding during 2011/2012 for the second playground for 5-12 year olds.

In the past three years, MLCC has made great progress with the development of this Community Campus. They have the basic access infrastructure in place, a master plan, utilities, the soccer field, basketball court, parking areas, playground area cleared, walking trail, two partially completed softball fields, and a senior housing complex with residents who will participate in care-taking the facility. They also have a meeting area and office space for the Community Council in the senior housing common area. The Meadow Lakes Seniors has plans to apply for funding from Alaska Housing Finance Corporation in 2012 to construct a second senior housing project on the Community Campus. The transformation of this 40-acre parcel of raw land by the Meadow Lakes Community is pretty amazing.

Now MLCC needs to begin the final phase of in the Meadow Lakes Community Campus master plan for development of the sports fields by completing the construction started last year so the sports facilities are 100% ready for use by residents and others in the Mat Su Borough.

MLCC proposes to use the funds from this appropriation to complete construction of the softball fields and tennis court; purchase required amenities for all completed areas, such as fencing, backstops, goals, and tennis nets; develop the picnic areas; construct a multi-use nature trail in the remaining treed portion of the 40 acres; and purchase necessary maintenance equipment.

The Community Center development is on the Mat-Su Borough CIP list and is listed as the top priority on the Service and Facility needs list in the Meadow Lakes Comprehensive Plan. The MSB Parks, Recreation, and Open Space Plan indicates there is a shortage of sports fields in the Borough. The Mat-Su Borough Parks and Recreation Department visited the site and was very impressed with the design and the way the Community Council has worked to get this project completed. They have asked if they can use this concept to show other groups in the Borough how to proceed with a similar development.

MLCC has and will be leveraging this funding with the funds from the Community Council. There will also be many hours of voluntary labor.

### **Project Timeline:**

This project will begin in August 2012 and finish September 2013. Expenditures are anticipated to occur August 2012 through October 2012 and again May 2013 to September 2013.

### **Entity Responsible for the Ongoing Operation and Maintenance of this Project:**

Meadow Lakes Community Council, Inc.

**Grant Recipient Contact Information:**

Name:	Tim Swezey
Title:	Board President
Address:	1210 Kim Drive, Suite B Wasilla, Alaska 99623
Phone Number:	(907)357-3999
Email:	tim.swezey@mlccak.org

Has this project been through a public review process at the local level and is it a community priority? ☒ Yes ☐ No



## **MATANUSKA-SUSITNA BOROUGH**

### **Office of the Borough Manager**

350 East Dahlia Avenue • Palmer, AK 99645

Phone (907) 745-9689 • Fax (907) 745-9669

John.Moosey@matsugov.us

December 28, 2011

Meadow Lakes Community Council

P.O Box 298663

Meadow Lakes, AK 99629

Dear Mr. Swezey:

I am writing to express support for the Council's plans to develop the Meadow Lakes Community property into an area that will provide a central community center and recreational area for the community and that benefits the community residents. We are happy that the Council has developed a master plan that includes sports fields, picnic areas, trails, a much needed community center, and senior housing.

We are pleased with all the Council has accomplished for this development and look forward to visiting and using the sports fields in the summer of 2012. This is a well rounded development with something for everyone including the planned playground for the children of this area.

Building these facilities will open the door for this community to come together in many ways, like the sports fields which will bring more residents together. We have a wonderful community here and this will be a welcome addition.

We fully support this Community Center project and are pleased to get behind this effort and urge our Governor and legislative delegation to support funding for the continued development.

Sincerely,

John Moosey  
Borough Manager

JM/al

## **Recreational and Tourist Facilities and Enhancements Needs List (Un-Prioritized - Alphabetical)**

Numerous other Recreational and Tourist Facilities and Enhancements have been nominated for inclusion in the six year CIP. Unfortunately, since there is only a limited amount of funding available these enhancements were not included in the above priority list. They have been included in alphabetical order in the Needs List for future reference.

- . Alaska Wild Bird Rehabilitation and Education Center
- . Bald Mountain Ridge Snowmachine Parking Area (end of Schrock Road)
- . Benka Lake Public Access
- . Big Lake State Park Rehabilitation
- . Borough-wide Historic Signing
- . Borough-wide Neighborhood Parks and/or Gardens
- . Borough-wide Park Access Program
- . Bumpus Ball Park Fencing
- . City of Palmer Neighborhood Parks and/or Gardens
- . City of Wasilla Neighborhood Parks and/or Gardens
- . Eastern Gateway on Glenn Highway
- . Fish Creek Wayside (Big Lake) STIP 6216
- . Goose Creek Regional Park (Sunrise Creek)
  - \$ Develop Camping Area
  - \$ Water Supply
  - \$ Day Use Areas
  - \$ Trails and Fishing Areas
- . Hawk Lane Trailhead, City of Houston
- . King Mountain Viewpoint Wayside
- . Knik-Museum and Knik Lakeside Park Improvements
- . Lake Lucille Camper Park Expansion
- . Little Susitna Park – Riverside near Olson Bridge
- . Lynne Lake/Honeybee Lake Recreational Access
- . Mat Valley Sportsman's Range Improvements
- . Meadow Lakes Community Park and Garden – This project will include a park setting, a community garden, playground equipment, picnic armadas, skate park and sports field
- . Meadow Lakes Equestrian Park
- . Meadow Lakes Non-leash Dog Park
- . Meadow Lakes Recreation Complex: Soccer fields and Tennis Courts
- . Meadow Lakes Baseball/Softball fields
- . Moose Creek Wayside and Campground
- . Nancy Lake State Recreation Area Trailhead and Trails
- . Neighborhood/Community Parks: Big Lake; Chickaloon; Sutton; Talkeetna; Trapper Creek; Willow
- . North Lakes Community Park
- . Northern Gateway of Parks Highway
- . Southern Gateway on Glenn Highway
- . Talkeetna Main Street/Historic District Enhancement
- . Trapper Creek Landing Park
  - \$ Boat Launch and Parking
  - \$ Road Access
  - \$ Day use Facilities

# Capital Improvement Program, FY 2013 - FY 2018 Public Comment Period

During a review period extending from April 15 – June 30, 2011, the Capital Improvement Program (CIP) for FY 2013 - FY 2018 that was adopted last year was sent to borough departments, advisory boards, commissions, service areas, community councils, and interested individuals for review and comment. The organizations were asked for project nominations for the FY 2013 - FY 2018 CIP. After nominations were received, a revised draft of the FY 2013 - FY 2018 CIP (containing project nominations) was prepared for the Transportation Advisory Board, the Aviation Advisory Board, the Parks, Recreation and Trails Advisory Board, the Planning Commission and Assembly for their review and approval. Listed below are the projects requested by organizations that responded.

## Big Lake Community Council

- North Shore Loop Road
- Big Lake Trail/Railroad Crossings
- South Big Lake Road Realignment
- Streetlights in Big Lake Core Area
- Big Lake Pathway Fish Creek Crossing

## Chickaloon Native Village

- Callison Street

## Meadow Lakes Community Council

- Meadow Lakes Community Center – via Vienna Woods
- Beverly Lake Road Connector – Church Road to Pittman Road
- Vine Road Upgrade from Parks Highway to Meadow Lakes Community Boundary
- Sylvan Road to Hollywood Road Connector
- Full Curl Road to Sylvan Road Connector5
- Increased MASCOT Stops in Meadow Lakes Community
- Birch Creek Senior Housing Bus Stops
- Meadow Lakes Community Intermodal Parking Facility
- Right Turn Lane at Pittman onto Parks Highway
- Turn Lanes at Midnight Sun Charter School10
- Traffic Signal at Intersection of Johnson Road and Parks Highway for Station 7-3
- Lighting at the Entrance of Meadow Lakes Senior Center at the end of Kim Drive in the Birch Creek Subdivision
- Continued Lighting of Meadow Lakes Community Bus Stops
- Survey of Donated Michelle Trail
- Bench Lake Trail Bridge across Little Susitna River
- Pittman Multi-Use Trail
- Church Road Multi-Use Trail
- Meadow Lakes Loop Multi-Use Trail
- Lucille Creek Multi-Use Trail
- Lucille Creek Trail Connector10
- Schrock Road Multi-Use Trail
- Trail Head Study for Bald Mountain
- Beverly Lake Road Multi-Use Trail from Church to Pittman
- Shared Cross Country Running, Skiing, & Equestrian Park Trails
- Sports Field Baseball/Softball Fields
- Horse Park
- Non-leash Dog Park
- Little Susitna Park
- Public Swimming Pool adjacent to Meadow Lakes High School
- Meadow Lakes Boundary Signs
- Meadow Lakes Hydrology Study
- Meadow Lakes Community Center and/or Gym
- Fire Station 7-3



# Meadow Lakes Community Council

## Meadow Lakes Sports Fields Project Pictures

These photos were all taken September 2011



View of Soccer Field from Basketball Court



View of Basketball Court before paving



View of Basketball Court after paving



View of Basketball Court (final)

## **Meadow Lakes Sports Fields Project Pictures**

**These photos were all taken September 2011**



View of Soccer Field from Housing Complex



Soccer Field looking towards Housing Complex

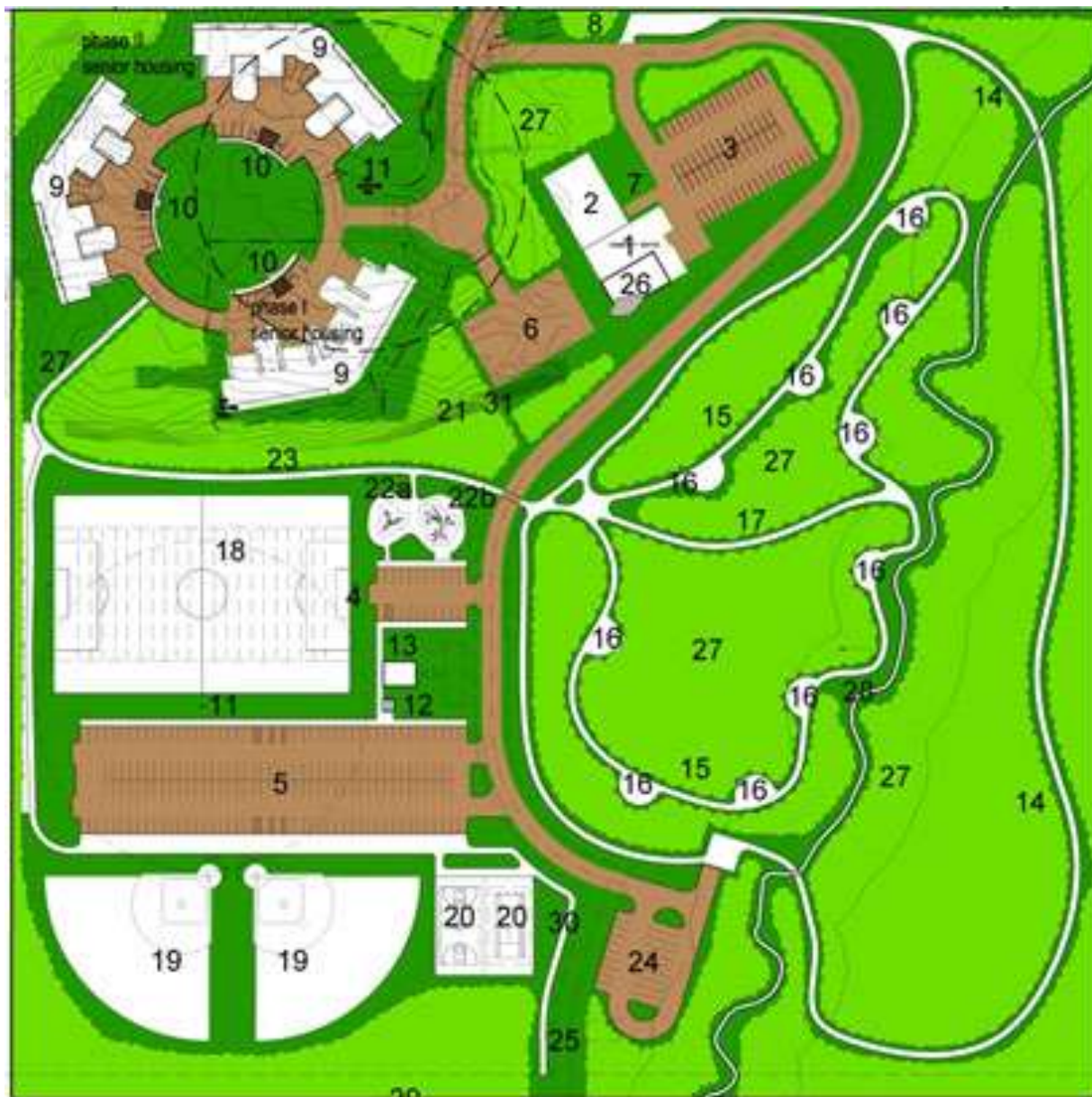


View of Future Softball Fields  
looking towards Soccer Field



View of Soccer Field from Housing Complex





Master Plan design showing:

- 18 - Soccer field
- 4/5 - parking lot
- 19 - Softball fields
- 20 - Basketball and Tennis courts
- 22a/22b Playgrounds
- 16/17 Nature trail loop